

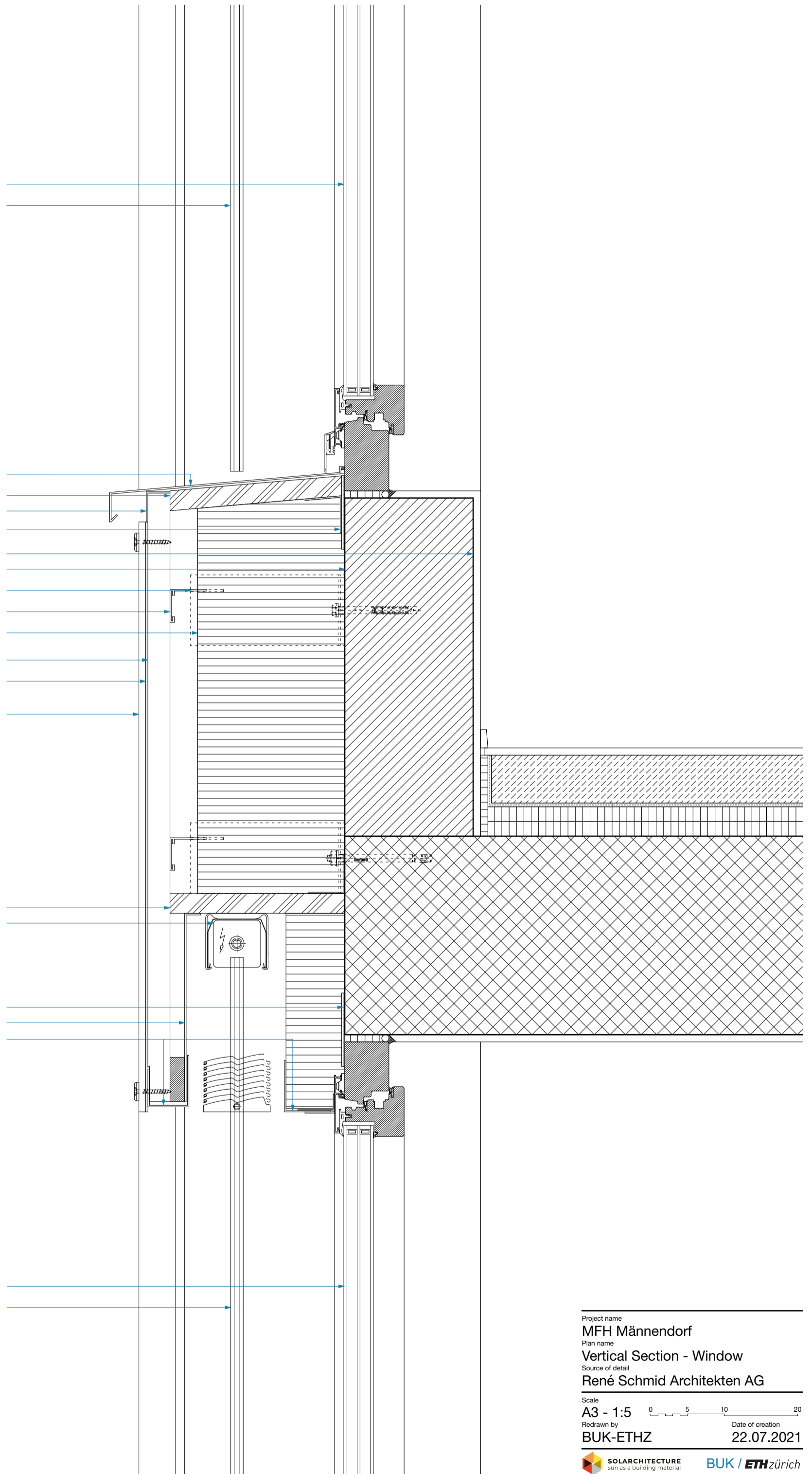
Wooden metal windows 3-fold
insulating glazing
Guide rail for slat blinds

Window sill aluminium - white
enamelled 2mm
Three-layer wood board 27mm
Fly-screen in aluminium
Supporting angle
Interior plaster 10mm
Brick wall 175mm
Bracket with GRP element
225mm
Horizontal L-profile in aluminium
Rock wool with black fleece
200mm
Vertical battens - Painted black
30x60mm
Black EPDM tape
Photovoltaic module - 4mm
structured front glass with pattern
RAL 8015 - monocrystalline cell -
4mm black printed rear glass

Three-layer wood board 27mm
Electric slat blind

Sealing tape
Fly-screen in aluminium
Aluminium U-profil 2mm

Wooden metal windows 3-fold
insulating glazing
Guide rail for slat blinds



Project name
MFH Männendorf
Plan name
Vertical Section - Window
Source of detail
René Schmid Architekten AG

Scale
A3 - 1:5 0 5 10 20
Redrawn by
BUK-ETHZ
Date of creation
22.07.2021